

T0R Series Recessed Wall Temperature

Wide range of thermistor options
Set-point & override options
Low-profile design



DESCRIPTION

The T0R series is designed for use in energy management systems in buildings. The flush mount sensor housing accommodates a wide range of thermistor options for sensing room temperature. Optional setpoint slider and override button can be added for additional control.

APPLICATIONS

- Room temperature measurement for building automation control

FEATURES

The industry's best looking temp sensor

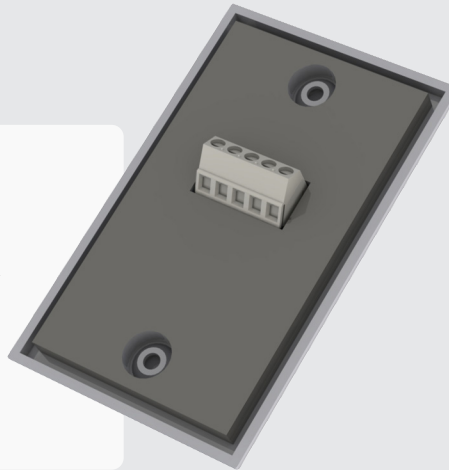
- Fits in any standard j-box or low voltage bracket.
- No exposed screws; unobtrusive tamper resistant design
- Complements CO2 sensor installations

User Friendly

- Wide range of thermistor options
- Set-point options
- Override options

Easy Wiring

- Streamlined enclosure design and 45° terminals ensure quick and simple installation



ORDERING

	<i>therm</i>	<i>ovrd</i>	<i>s-p</i>
	□	□	□
T0R -			
Temperature			
C = 100Pt (385)			
D = 1000Pt (385)			
E = 10k type 2			
F = 10k type 3			
G = 10k type 3 w/11k shunt			
H = 3k			
I = 2k2			
J = 1k8			
K = 20k			
L = 100k			
Override			
A = None			
B = N.O.			
Set-point			
A = None			
B = 1k Ω setpoint slider			
C = 10k Ω setpoint slider			
D = 5k Ω setpoint slider			
E = 20k Ω setpoint slider			
T = 200-900 Ω			

SPECIFICATIONS

	Material	ABS Plastic
Enclosure	Dimensions	4.45" h x 2.7" w x 0.5" d (depth measured from wall)

